

FLORIS Earrings
Design by *Angel Accessories*



*Amos® Par Puca® Paris Bronze Rose
Hearts FP Selection® Op Sky Blue Bronze*

Materials for 1 earring:

- Fireline 4 lb
- Oval 10/8 mm
- Earring hook
- Amos® Par Puca® Paris Bronze Rose (10 pcs)
- Hearts FP Selection® Op Sky Blue Bronze (1 pcs)
- Arcos® Par Puca® Paris Gold Mat (6 pcs)
- Toho Round 11/0 Galvanized Aluminium
- Toho Demi Round 11/0 Gold Ld Rainbow Crystal
- Miyuki Round Rocailles (RR 15/0) 15/0 Galvanized Hot Pink
- Miyuki Round Rocailles (RR 15/0) 15/0 Silver Lined Cobalt
- Miyuki Round Rocailles (RR 15/0) 15/0 Galvanized Silver
- Miyuki Round Rocailles (RR 15/0) 15/0 Metallic Light Bronze
- Miyuki Delica 11/0 Silver Lined Pink
- Miyuki Round Rocailles 11/0 (RR 11/0) Dark Bronze
- Pearl 4 mm Gold (1 pcs)



- The first step in making the earring is to dress the crystal, which is an oval measuring 10/8 mm. The base is made of 24 Miyuki Delica beads.

1



- To cover the crystal use peyote stitch.

2



- In the next row, use 12 Miyuki RR 15/0.

3



- Use 12 beads 15/0 alternating the colors.
- After finishing the row, shape into an oval and place the crystal.

4



- Turn the crystal over and repeat the same steps as on the front.
- In the first row, use 12 beads 15/0.

5



- Use size 15/0 beads to cover the back.

6



- It is preferable that the back of the crystal be completely covered to avoid discoloration.

7



- After the finish the back, turn it over the front of the crystal.

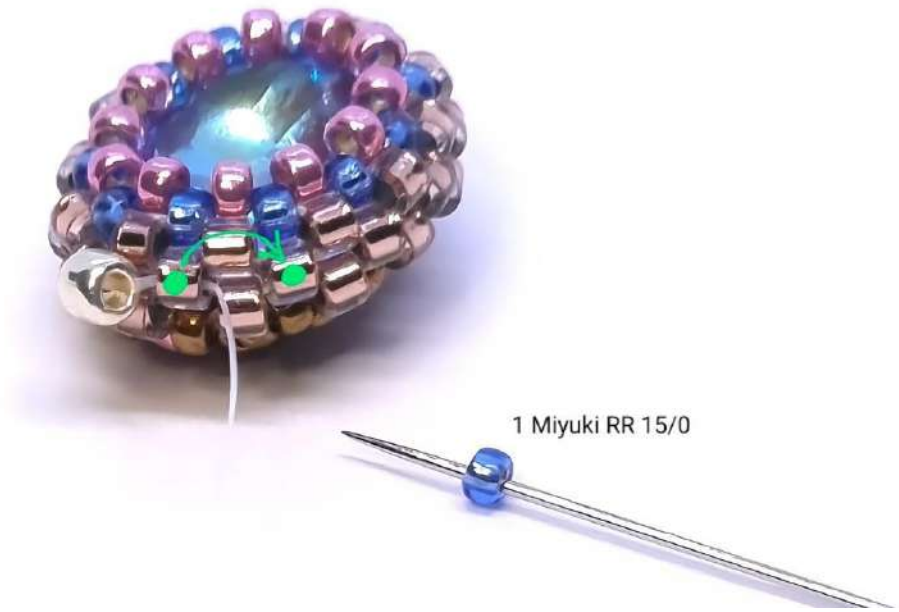
8



1 Toho Round 11/0



9



10



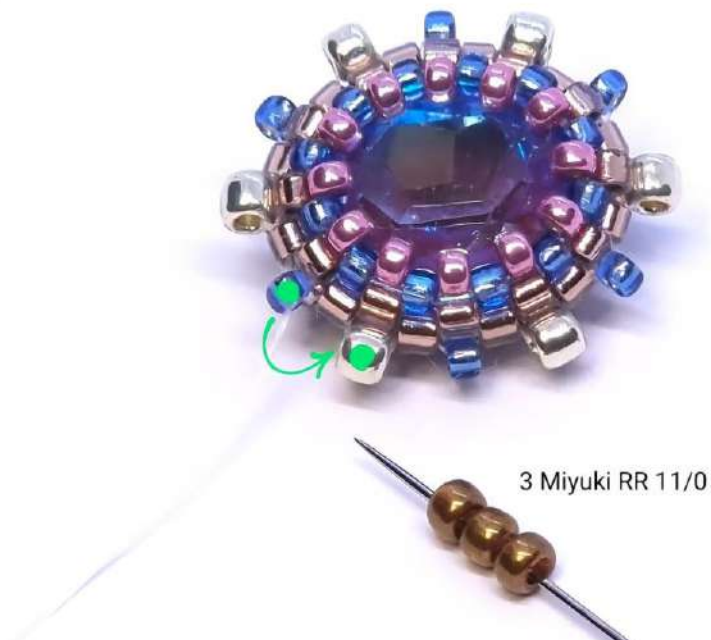
- This is what the crystal should look like after the first row of beads is worked. Insert the needle into the blue Miyuki bead near the top of the crystal. See the green arrow!

11



- Insert 3 Miyuki RR 11/0 between the blue bead and the next Toho bead.

12



- Insert 3 Miyuki RR 15/0 between Toho bead and the next blue Miyuki.

13

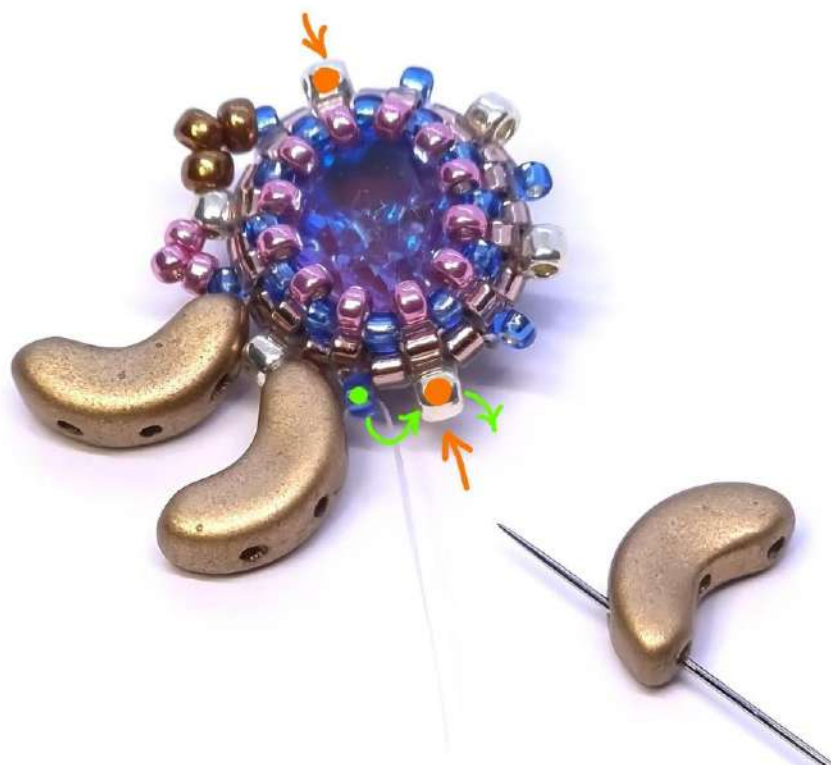


- Insert an Arcos between the next 2 beads.

14



15



- After you pass the top of the crystal, change the position of the Arcos bead. Add 3 more Arcos beads.

16



17



- After inserting the 3 Arcos beads, add 3 Miyuki RR 15/0.

18



- With the last 3 Miyuki RR 11/0 you finish the 2nd row. In these ends of the crystal we will work between the 2 blue Miyuki beads.

19



- Thread the following beads onto the needle. Pay attention to their order!

20



- After you have inserted all the beads on the needle, in the correct order, you return with the needle through the pearl, the heart, the Toho bead and the first Miyuki, keeping the pink Miyuki RR 15/0 bead at the end of the pearl,

21



- Take 2 Miyuki RR 15/0 and a Toho Round 11/0 on the needle and thread it into the blue Miyuki bead. Come out through the tip of the 3 bronze Miyuki RR 11/0.

22



- Between the 2 groups of beads insert 1 Toho Demi Round 11/0, 2 Amos beads and a Toho Demi Round 11/0.



- Connect the tip of the Miyuki RR 15/0 bead cluster to the Arcos bead with 3 Miyuki RR 15/0 beads.



- Insert between the two Arcos beads, 1 Amos and 1 Toho Round 11/0.

25



- Insert the same group of beads as in the previous step.

26



- Between the 2 Arcos beads at the end of the crystal insert 1 Miyuki RR 8/0.

27



- Insert 1 Amos and a Toho Round 11/0 between the 2 Arcos beads.

28



- Repeat the same steps on the other side of the crystal. Pay attention to the order of the beads on the needle!

29



30



3 Miyuki RR 15/0



31



1 Toho Demi Round 11/0
2 Amos
1 Toho Demi Round 11/0



- The next steps are for strengthening and stability of the earring. With 3 Miyuki RR 15/0 beads on the needle tie the tip of the group of 3 beads with the Amos bead. See the arrow!
- Come out with the needle after the 2 Amos beads.

32



- Insert a Toho Demi Round 11/0 between the group of Amos and the next Arcos bead.

33



- Between the Arcos bead and the next Amos bead, insert 2 Miyuki RR 15/0 beads. Pass the needle through the next Arcos bead as well.

34



- Between the Arcos and the next Amos bead insert 1 blue Miyuki RR 15/0. Pass through the next Arcos bead. Exit with the needle at the tip of the crystal.

35



- At the top of the crystal, insert the group of beads, consisting of 1 Miyuki RR 15/0, 1 Amos, 1 Toho Demi Round 11/0, 1 Amos, 1 Miyuki RR 15/0

36



- We repeat the steps as on the other side of the crystal.

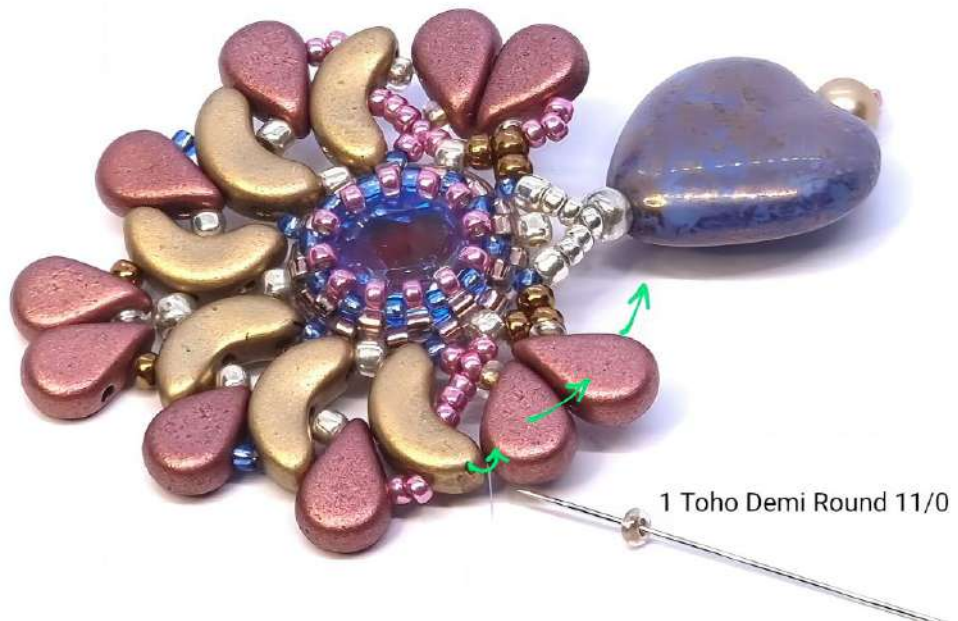
37



38

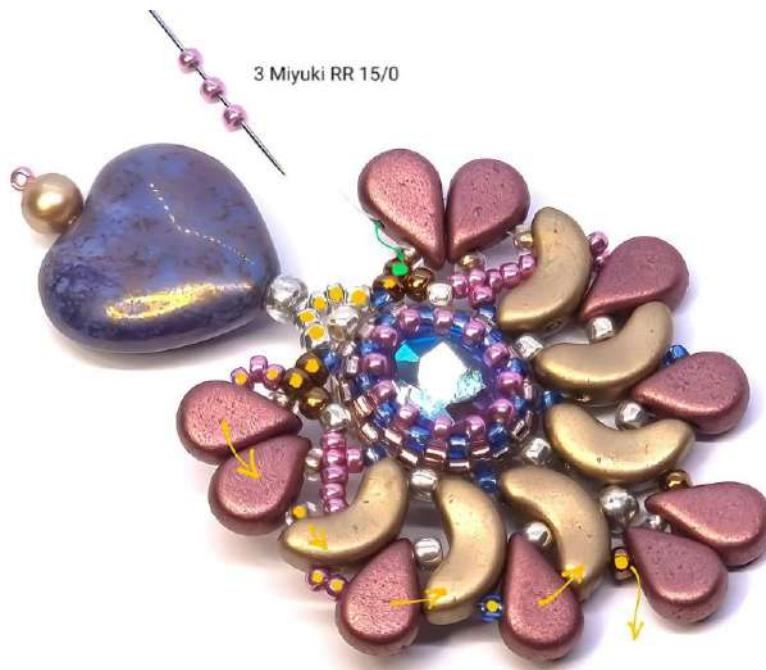


39



- After inserting the last 3 Miyuki RR 15/0 beads, pass the needle through all the marked beads, according to the arrow. Exit at the top of the crystal after the Miyuki RR 15/0 bead that supports the 2 Amos beads.

40



41



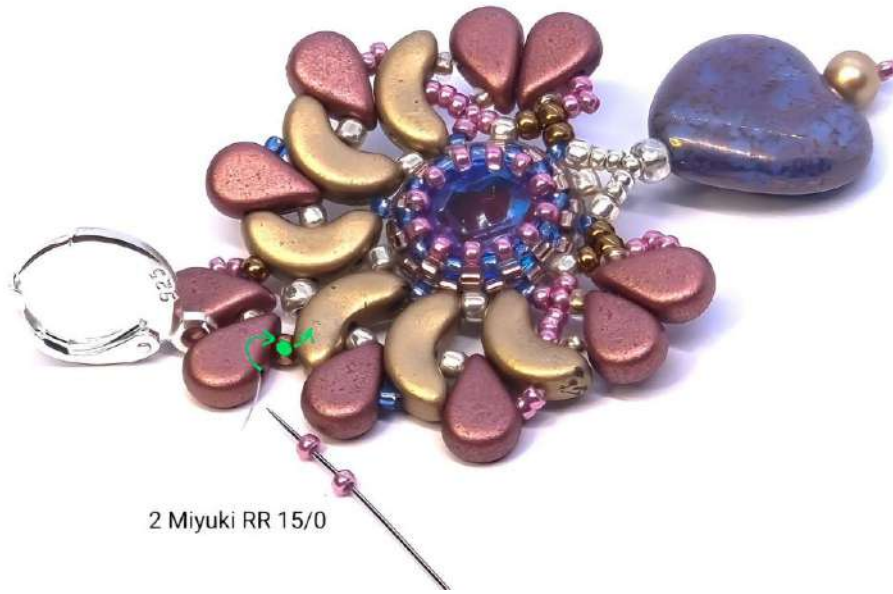
- Between the 2 Amos beads insert the earring's hook.

42



- With 2 Miyuki RR 15/0 beads, connect the Arcos bead to the Miyuki bead at the base.

43



- With a Miyuki RR 15/0 bead on the hook, thread the Miyuki RR 8/0 bead between the 2 Arcos beads.

44



- After you get out of the Miyuki RR 8/0 bead, put a new Miyuki RR 15/0 bead on the needle. Insert the needle into the Miyuki bead at the base of the 2 Amos beads.
- For better strengthening and stability of the earring hoop, you can pass the needle through the worked beads once more.
- Because the earring is finished, you can continue weaving the thread as long as it allows you.

45





I hope you liked it! 🍀